

Double Queen or King Standard

Large room has log furniture throughout with two queen or one king pillow-top beds, television, desk, chair and a coffee maker.



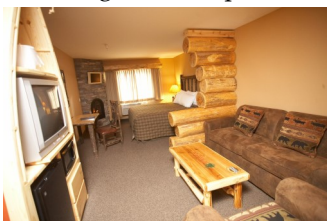
Double Queen Suite

Sleeping area of the room has two queen pillow-top beds and a television. Furnishings include a sleeper sofa, coffee table, desk and chair. The room is equipped with a coffee maker, microwave and refrigerator. A partial log wall separates the sitting area from the sleeping area.



King Fireplace Suite

Sleeping area of the room has one king pillow-top bed, fireplace, and television. Furnishings include a sleeper sofa, coffee table, desk and chair. The room is equipped with a coffee maker, microwave and refrigerator. A partial log wall separates the sitting area from the sleeping area.



Genuine Up North Hospitality

- 54 Lodge Style Rooms & Suites
- Complimentary Breakfast daily 6am-10am
- 7,300 square feet of Banquet/ Meeting space
- Host groups from 10-300
- Indoor Pool, Kiddie Pool, Sauna and Oversized Hot tub
- "The Gold Mine" Arcade Room
- Whitefish Lodge Gift Shop
- In Room High Speed Internet
- Picnic Area with Grills
- Cable TV
- Campfires S'mores kits available for purchase in the gift shop
- Complimentary Snowshoes
- Whitefish Catering
- Located on the 11th Hole of Crosswoods Golf Course



King Whirlpool Suite

Two room suite features a private bedroom with a king pillow-top bed, dresser and television. Living room area has a sleeper sofa, coffee table, desk, chair, television and whirlpool tub. The room is equipped with a coffee maker, microwave and refrigerator.



Queen Whirlpool Fireplace Suite

Two room suite features a private bedroom with a queen pillow-top bed, fireplace, television and whirlpool tub. Living room area has a sleeper sofa, coffee table, desk, chair and television. The room is equipped with a coffee maker, microwave and refrigerator.



King Kiddy Suite


The kid's suite is divided by a semi-private log wall with two open windows and open entry door, giving them a feeling of being in their own private cabin! The suite is decorated with a full wall mural, television and pillow-top bunk beds. The main room has one king size pillow-top bed, sleeper sofa, coffee table, desk, chair and television. The room is equipped with a coffee maker, microwave and refrigerator.



King Whirlpool Theatre Suite

Large three room suite featuring a home theatre room with 55"-4k flat screen television, built-in surround sound system, DVD player, theatre couch seating, master bedroom with one king size pillow-top bed, TV and dresser. The living room has a whirlpool tub, television, sleeper sofa, coffee table, desk and chair. The room is equipped with a coffee maker, microwave and refrigerator.



	Winter/Spring 1/4-5/23 <i>Weekday/Weekend</i>	Summer 5/24-9/2 <i>Weekday/Weekend</i>	Fall 9/3-10/31 <i>Weekday/Weekend</i>	Winter 11/1-12/19 <i>Weekday/Weekend</i>	Holidays 12/20-1/3/20 <i>Weekday/Weekend</i>
 Double Queen (14) or King Standard (4)	\$119/\$139	\$169/\$189	\$129/\$149	\$109/\$129	\$149/\$169
Double Queen Suite (21)	\$129/\$149	\$179/\$199	\$139/\$159	\$119/\$139	\$159/\$179
King Fireplace Suite (8)	\$139/\$159	\$189/\$209	\$149/\$169	\$129/\$149	\$169/\$189
Specialty Suite (6)	\$149/\$169	\$199/\$219	\$159/\$179	\$139/\$159	\$179/\$199
Theatre Suite (1)	\$189/\$209	\$239/\$259	\$199/\$219	\$179/\$199	\$219/\$239

14150 Swann Drive, Crosslake, MN 56442 • 218-692-2246

Contact the sales department for group block discounts

Visit our website: www.whitefish-lodge.com for more information, great packages and specials
View all the Whitefish Properties at www.crosslakereservations.com



whitefish-lodge.com



(800)692-0727
Crosslake, MN